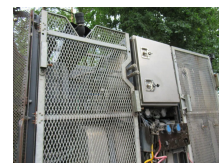


## Scania R620-V8 R 620 V8 8X4

<b>Chassis</b>	Charge lourde
<b>Année de construction</b>	2010
<b>Id</b>	BG0235
<b>Prix</b>	€ 27.900,-
<b>Configuration des essieux</b>	8x4
<b>Transmission</b>	Transmission manuelle
<b>Kilométrage</b>	1.038.000 km
<b>Carburant</b>	Diesel
<b>Classe d'émission</b>	Euro 5
<b>Puissance</b>	456 kW (620 PK)
<b>Poids à vide</b>	12.900 kg
<b>Etat général</b>	Bon



### Description

SCANIA R620 8X4 THREE PEDAL  
 MOTOR/ ENGINE SCANIA V8 TURBO 620HP  
 RETARDER  
 AIRCO  
 HEAVY TRANSPORT